

PRINT



ARLON

PRINT MEDIA PRODUCTS

Wrapped in SLX™ Cast Wrap by Blurred Sign Co.

A man in a factory setting, overlaid with an orange tint. The background shows industrial machinery and a worker in the distance.

Your Partner of Choice.

At Arlon, we don't take this statement lightly. As a company that puts customers at the forefront, we like to think of ourselves as nimble—able to work quickly and respond to our customers needs.



Arlon, established in 1958 near Los Angeles, California, is a leading global manufacturer of pressure-sensitive adhesive vinyls for the sign and graphics industry.

As one of the world's most experienced casting companies, Arlon has gained a worldwide reputation for quality and innovation.

Arlon is proudly ISO 9001:2015 certified.

TECHNICAL SERVICES:

- p** Toll Free: 1 877 ARLON98 / 1 877 275 6698
- e** GraphicsTechnicalSupport@arlon.com

CUSTOMER SERVICE:

- p** 1 800 232 7161 / 714 985 6300
- e** GraphicsOrders@arlon.com

MADE USA
IN THE

98% on time
DELIVERY





WRAPITRIGHT.COM

WrapItRight.com gives you access to expert advice and tutorials from industry leaders and specialists!

- ▶ How-to video library featuring vehicle wraps, commercial signage, and digital printing techniques.
- ▶ Create custom playlists and watch videos later.
- ▶ Get updates on Trade Shows and Training Events.



Stand Out in More Ways than One

From eye-catching printed graphics to a vibrant color spectrum, Arlon offers you more than one way to get noticed. As a trusted brand with a proven track record of corporate branding success, Arlon's cut graphic line offers industry leading performance and warranties.

arlon.com/cutgraphics

Arlon Technology



FLITE Technology®: Arlon's brand name for our lite contact system which allows graphics to float over a substrate until firm pressure is applied. FLITE Technology® guarantees the fastest install while ensuring long-term bond and clean removability.



X-Scape Technology®: Arlon's brand name for our air-egress technology which allows air to release through tiny channels in the adhesive backed vinyl used for fleet, vehicle and general signage applications. X-Scape Technology® allows installers to achieve a speedy installation while maintaining a high enough tack to ensure long-term bond.

arlon.com/technology



Being your partner of choice means more to us than you know. Arlon Graphics goal is to provide you with the highest quality products that perform how they should. Our products are supported by our comprehensive warranties to ensure your complete satisfaction.

arlon.com/warranties

Table of Contents

Cast Fleet & Vehicle Wraps	4
Calendered Fleet & Vehicle Wraps	6
Exterior Building & Wall Wraps	8
Commercial & Backlit Signage	10
Multi-Purpose	12
Interior Décor	14
Industrial	16
Promotional	28
Overlaminates	20

Your Ideas in Motion

From start to finish, consistent print quality, ease of application, and versatility will keep your business moving no matter how many vehicles you're wrapping.



Wrapped in SLX™ Cast Wrap with Series 3270 Overlaminate by SignBizWA

	DESCRIPTION	FACE FILM THICKNESS	ADHESIVE	RELEASE LINER	FINISH	APPLICATIONS
SLX™ CAST WRAP	Premium Cast Film with Low Profile FLITE Technology®	2-Mil (50 Micron)	Clean Removing, Repositionable (Light Gray)	Lay-Flat Polycoated with Low Profile FLITE Technology®	Gloss	Vehicle Graphics (Full, Partial) Vehicle Decals Fleet Graphics
DPF 6100XLP	Premium Cast Film with Low Profile X-Scape Technology®	2-Mil (50 Micron)	Clean Removing, Repositionable (Light Gray)	Lay-Flat Polycoated with Low Profile X-Scape Technology®	Gloss	Vehicle Graphics (Full, Partial) Vehicle Decals Fleet Graphics
DPF 6000XRP	Premium Multi-Purpose Cast Film with X-Scape Technology®	2-Mil (50 Micron)	Clean Removing, Repositionable (Light Gray)	Lay-Flat Polycoated with X-Scape Technology®	Gloss	Vehicle Graphics (Full, Partial) Vehicle Decals Fleet Graphics Multi-Purpose Commercial Wall Graphics (Interior, Exterior)
DPF 6000RP WHITE/CLEAR	Premium Multi-Purpose Cast Film	2-Mil (50 Micron)	DPF 6000RP White: Clean Removing, Repositionable (Light Gray) DPF 6000RP Clear: Permanent (Clear)	Lay-Flat Polycoated	Gloss	Vehicle Graphics (Full, Partial) Vehicle Decals Fleet Graphics Multi-Purpose Commercial Wall Graphics (Interior, Exterior)
ILLUMINITE WRAP™	Fleet Grade * Class 2 Reflective Film with Low Profile FLITE Technology®	5-Mil (125 Micron)	Clean Removing, Repositionable (Light Gray)	Lay-Flat Polycoated with Low Profile FLITE Technology®	Gloss	Vehicle Graphics (Full, Partial) Vehicle Decals Fleet Graphics Fleet Markings
DPF 2400XLP	Fleet Grade * Reflective Film with Low Profile X-Scape Technology®	5-Mil (125 Micron)	Repositionable (Light Gray)	Lay-Flat Polycoated with Low Profile X-Scape Technology®	Gloss	Vehicle Decals Fleet Graphics Fleet Markings



Wrapped in SLX™ Cast Wrap with Series 3270 Overlaminates by Blurred Sign Co.



Wrapped in SLX™ Cast Wrap with Series 3270 Overlaminates by Beyond Printing

WRAPITRIGHT®

INSTRUCTIONAL VIDEO LIBRARY



WATCH THE VIDEO ▶

Applying Vinyl into a Deep Channel

Many commercial wraps include difficult applications over and around deep channels. This video shows the ideal technique for installing film into channels.

For more videos, visit wrapitright.com



SIMPLE & EASY Vehicle Prep!

When cleaning a vehicle before an installation use a simple degreaser, like your average dish soap, instead of a common washing wax.

RECOMMENDED SURFACES	DURABILITY (UNPRINTED)	ROLL WIDTHS	ROLL LENGTHS	COMPATIBLE OVERLAMINATE	INK COMPATIBILITY
Compound Curves / Deep Channels Concave Surfaces / Corrugated Panels Fleet Panels (Flat with Rivets)	7 Years	1372mm 1524mm	22,86m ✦ 45,72m	Series 3210 Series 3270 Series 3310	Eco-Solvent / Solvent UV / Latex Certified for HP Latex Inks
Compound Curves / Deep Channels Concave Surfaces / Corrugated Panels Fleet Panels (Flat with Rivets)	7 Years	1372mm 1524mm	45,72m	Series 3210 Series 3270 Series 3310	Eco-Solvent / Solvent UV / Latex Certified for HP Latex Inks
Compound Curves / Deep Channels Concave Surfaces / Corrugated Panels Fleet Panels (Flat with Rivets) Smooth Walls	7 Years	1372mm 1524mm	22,86m ✦ 45,72m	Series 3210 Series 3270 Series 3310	Eco-Solvent / Solvent UV / Latex Certified for HP Latex Inks
Compound Curves / Deep Channels Concave Surfaces / Corrugated Panels Fleet Panels (Flat with Rivets) Smooth Walls	7 Years	1372mm 1524mm	22,86m ✦ 45,72m	Series 3210 Series 3270 Series 3310 Series 3350 ▲	Eco-Solvent / Solvent UV / Latex Certified for HP Latex Inks
Smooth, Flat Panels / Compound Curves Moderate Channels / Soft Curves Concave Surfaces / Corrugated Panels Fleet Panels (Flat with Rivets)	7 Years	1219mm	9,14m 22,86m 45,72m	Series 3210 Series 3200	Eco-Solvent / Solvent UV / Latex Certified for HP Latex Inks
Smooth, Flat Panels / Compound Curves Moderate Channels / Soft Curves Fleet Panels (Flat with Rivets)	7 Years	1219mm	45,72	Series 3210 Series 3200	Eco-Solvent / Solvent UV / Latex

* Fleet Grade exceeds engineering standards ✦ Only available in 1372m width ▲ DPF 6000RP Clear Only

Fuel your Brand

Providing you with end-to-end solutions that keep efficiency and price point in mind.



Wrapped in DPF 4600GLX by Moldex

	DESCRIPTION	FACE FILM THICKNESS	ADHESIVE	RELEASE LINER	FINISH	APPLICATIONS
FUSION WRAP	High Performance Calendered Film with Low Profile FLITE Technology®	2.4-Mil (60 Micron)	Clean Removing, Repositionable (Light Gray)	Lay-Flat Polycoated with Low Profile FLITE Technology®	Gloss	Vehicle Graphics (Full, Partial) Vehicle Decals Fleet Graphics
DPF 4600GLX/MLX	High Performance Multi-Purpose Film with Low Profile X-Scape Technology®	3.2-Mil (80 Micron)	Clean Removing, Repositionable (Light Gray)	Lay-Flat Polycoated with Low Profile X-Scape Technology®	Gloss Matte	Vehicle Graphics (Partial) Vehicle Decals Fleet Graphics Multi-Purpose Commercial Window Graphics Wall Graphics (Interior)
DPF 45WF	One-Way Vision Window Film 60/40 Perforated Pattern	6-Mil (150 Micron)	Clean Removing, Low Tack (Clear)	Lay-Flat Polycoated	Satin	Window Graphics



Wrapped in Fusion Wrap with Series 3170 Overlaminates



Wrapped in 4600GLX by Dirty Boys Graphics



WATCH THE VIDEO ▶

When and How to Use a Calendered Vehicle Wrap Film

Pitching a calendered wrap film can be the difference between bidding and winning a job. Knowing when and how to use calendered film is going to be key.

For more videos, visit wrapitright.com

PRO TIPS

CHOOSING **Calendered Film**

Specifying a calendered film can give you an economic advantage in certain instances. Calendered films are ideal options for flat to simple curves, or short to medium term graphics.

RECOMMENDED SURFACES	DURABILITY (UNPRINTED)	ROLL WIDTHS	ROLL LENGTHS	COMPATIBLE OVERLAMINATE	INK COMPATIBILITY
Soft to Moderate Curves Fleet Panels (Flat without Rivets)	7 Years *	1372mm 1524mm	45,72m	Series 3170 / Series 3210 Series 3270 / Series 3420	Eco-Solvent / Solvent UV / Latex Certified for HP Latex Inks
Soft Curves Fleet Panels (Flat without Rivets) Common Sign Substrates Smooth Walls Glass	7 Years *	1372mm 1524mm	45,72m	Series 3170 Series 3210 Series 3420 Series 3350	Eco-Solvent / Solvent UV / Latex Certified for HP Latex Inks
Glass	1 Year	1372mm 1524mm	50m	Series 3200	Eco-Solvent / Solvent UV / Latex ✦

* 7 year durability applies when paired with an Arlon cast overlaminates ✦ Optimal printing on HP Latex 360

Surfaces are not Equal

Transform hard-to-stick brick, concrete and stucco into larger than life graphics.
From the window to the walls, no surface is left untouched.



Wrapped in DPF 8000™ Ultra Tack by Industry Graphics

	DESCRIPTION	FACE FILM THICKNESS	ADHESIVE	RELEASE LINER	FINISH	APPLICATIONS
DPF 6700	Premium Cast Wall Wrap Film	2-Mil (50 Micron)	Permanent (Clear)	Lay-Flat Polycoated	Gloss	Building Wraps Wall Graphics (Interior, Exterior)
DPF 8000™ ULTRA TACK	Industrial Grade Multi-Purpose Calendered Film for Hard-to-Stick Surfaces	3.5-Mil (90 Micron)	Permanent, Ultra Tack (Clear)	Lay-Flat Polycoated	Satin	Building Wraps Wall Graphics (Exterior) ABS Plastic Graphics
DPF 8200X HIGH TACK	Industrial Grade Multi-Purpose Calendered Film with Low Profile X-Scape Technology®	3.5-Mil (90 Micron)	Permanent, High Tack (Clear)	Lay-Flat Polycoated with Low Profile X-Scape Technology®	Satin	Building Wraps Wall Graphics (Interior, Exterior) Low Surface Energy Substrates
DPF 8200 HIGH TACK	Industrial Grade Multi-Purpose Calendered Film for Exterior Wall and Low Surface Energy Substrates	3.5-Mil (90 Micron)	Permanent, High Tack (Clear)	Lay-Flat Polycoated	Satin	Building Wraps Wall Graphics (Exterior) Low Surface Energy Substrates
DPF 47WF	One-Way Vision Window Film 70/30 Perforated Pattern	6-Mil (150 Micron)	Clean Removing, Low Tack (Clear)	Lay-Flat Polycoated	Satin	Window Graphics



Wrapped in DPF 8200 High Tack



Wrapped in DPF 47WF with Series 3200 Overlamine by Bluemedia

WRAPITRIGHT®

INSTRUCTIONAL VIDEO LIBRARY



WATCH THE VIDEO ▶

Tiling for Large Wall Graphics

Successful installations of large wall graphics are dependent upon preparation and good design practices. This video will show you how to prepare a graphic for installation.

For more videos, visit wrapitright.com



THE IMPORTANCE OF **Outgassing**

Before laminating your solvent printed graphic, always allow **24 hours of outgassing.**

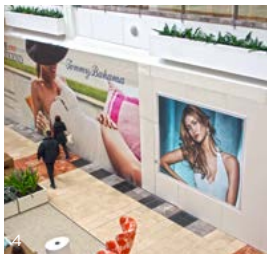
RECOMMENDED SURFACES	DURABILITY (UNPRINTED)	ROLL WIDTHS	ROLL LENGTHS	COMPATIBLE OVERLAMINATE	INK COMPATIBILITY
Brick, Concrete & Stucco Textured Surfaces & Substrates	7 Years *	1372mm 1524mm	22,86m 45,72m	Series 3210 Series 3200 Series 3270	Eco-Solvent / Solvent UV / Latex Certified for HP Latex Inks
Brick, Concrete & Stucco Textured Surfaces & Substrates Smooth Walls ABS Plastics	7 Years *	1372mm 1524mm	22,86m 45,72m	Series 3210 / Series 3270 Series 3420 / ProTec Series 3960	Eco-Solvent / Solvent UV / Latex Certified for HP Latex Inks
Smooth and Textured Surfaces & Substrates Brick, Concrete & Stucco Low Surface Energy Substrates	7 Years *	1372mm 1524mm	22,86m 45,72m	Series 3210 / Series 3270 Series 3420 / ProTec Series 3960	Eco-Solvent / Solvent UV / Latex Certified for HP Latex Inks
Smooth and Textured Surfaces & Substrates Brick, Concrete & Stucco Low Surface Energy Substrates	7 Years *	1372mm 1524mm	22,86m 45,72m	Series 3210 / Series 3270 Series 3420 / ProTec Series 3960	Eco-Solvent / Solvent UV / Latex Certified for HP Latex Inks
Glass	1 Year	1372mm 1524mm	50m	Series 3200	Eco-Solvent / Solvent UV / Latex ♣

* See PIB for warranty exclusions ♣ Optimal printing on HP Latex 360

Make an Impact

Don't let your signage get lost in the crowd. Choosing a film with both flexibility and vibrant print quality will give you the visibility you need for your graphics to perform everyday.

	DESCRIPTION	FACE FILM THICKNESS	ADHESIVE	RELEASE LINER	FINISH	APPLICATIONS
DPF 4600GLX/MLX	High Performance Multi-Purpose Film with Low Profile X-Scape Technology®	3.2-Mil (80 Micron)	Repositionable (Light Gray)	Lay-Flat Polycoated with Low Profile X-Scape Technology®	Gloss Matte	Multi-Purpose Commercial Wall Graphics (Interior) Window Graphics Vehicle Graphics (Partial) Vehicle Decals Fleet Graphics
DPF 4500GLX/MLX	Intermediate Calendered Film with Low Profile X-Scape Technology®	3-Mil (75 Micron)	Permanent (Light Gray)	Lay-Flat Polycoated with Low Profile X-Scape Technology®	Gloss Matte	Standard Signage (Permanent) Display Graphics
DPF 4500GX	Intermediate Calendered Film with Low Profile X-Scape Technology®	3-Mil (75 Micron)	Permanent (Clear)	Lay-Flat Polycoated with Low Profile X-Scape Technology®	Gloss	Standard Signage (Permanent) Display Graphics Window Graphics
DPF 4500GT/MT	Intermediate Calendered Film	3-Mil (75 Micron)	Permanent (Light Gray)	Lay-Flat Polycoated	Gloss Matte	Standard Signage (Permanent) Display Graphics
DPF 4500G WHITE/CLEAR	Intermediate Calendered Film	3-Mil (75 Micron)	Permanent (Clear)	Lay-Flat Polycoated	Gloss	Standard Signage (Permanent) Display Graphics Second Surface Signage * Window Graphics *
DPF 6000RP CLEAR	Premium Clear Cast Film	2-Mil (50 Micron)	Permanent (Clear)	Lay-Flat Polycoated	Gloss	Backlit Signage Standard Signage (Permanent) Display Graphics Second Surface Signage Window Graphics Vehicle Graphics (Full, Partial) Fleet Graphics
DPF 6500	Premium Translucent Cast Film	2-Mil (50 Micron)	Permanent (Clear)	Lay-Flat Polycoated	Gloss	Backlit Signage Display Graphics



1 Wrapped in DPF 4600GLX; 2 Wrapped in DPF 6000RP Clear; 3 Wrapped in DPF 6500; 4 Wrapped in DPF 4500GT



Wrapped in DPF 4500GLX

RECOMMENDED SURFACES	DURABILITY (UNPRINTED)	ROLL WIDTHS	ROLL LENGTHS	COMPATIBLE OVERLAMINATE	INK COMPATIBILITY
Common Sign Substrates / Glass Smooth Walls / Soft Curves Fleet Panels (Flat without Rivets)	7 Years ♣	1372mm 1524mm	45,72m	Series 3170 Series 3210 Series 3270 Series 3420 Series 3350	Eco-Solvent / Solvent UV / Latex Certified for HP Latex Inks
Common Sign Substrates Glass	5 Years	1372mm 1524mm	45,72m	Series 3170 Series 3210 Series 3270 Series 3420	Eco-Solvent / Solvent UV / Latex
Common Sign Substrates Glass	5 Years	1372mm 1524mm	45,72m	Series 3170 Series 3210 Series 3270 Series 3420	Eco-Solvent / Solvent UV / Latex
Common Sign Substrates Glass	5 Years	1372mm 1524mm	45,72m	Series 3420	Eco-Solvent / Solvent UV / Latex
Common Sign Substrates Glass	5 Years	1372mm 1524mm	45,72m	DPF 4500G White: Series 3420 DPF 4500G Clear: Series 3200	Eco-Solvent / Solvent UV / Latex ▲
Glass / Common Sign Substrates Compound Curves / Deep Channels Concave Surfaces / Corrugated Panels Fleet Panels (Flat with Rivets)	7 Years	1372mm 1524mm	22,86mm 45,72m	Series 3200 Series 3210 Series 3270 Series 3310 Series 3350	Eco-Solvent / Solvent UV / Latex
Glass / Sign Plexi Common Sign Substrates	7 Years	1372mm 1524mm	22,86mm ♣ 45,72m	Series 3200 / Series 3210 Series 3270 / Series 3350	Eco-Solvent / Solvent / UV

* Use with DPF 4500G Clear ♣ 7 year durability applies when paired with an Arlon cast overlaminate ▲ Not compatible with DPF 4500G Clear ♠ Only available in 1372mm width

WRAPITRIGHT®

INSTRUCTIONAL VIDEO LIBRARY



WATCH THE VIDEO ▶

Flat Substrate Application

Laying out large graphics by hand can be difficult to do. This video shows how you can use air-egress vinyl to make these application projects simple and consistent.

For more videos, visit wrapitright.com

PRO TIPS

HOW TO PREVENT Pre-adhesion

Using an application fluid for wet applications will help the graphic float onto the surface to prevent pre-adhesion.

Freedom of Application

This collection features our most versatile films allowing you to use them for multiple applications while maximizing profitability.



Wrapped in DPF 6700 by 12-Point Signworks

	DESCRIPTION	FACE FILM THICKNESS	ADHESIVE	RELEASE LINER	FINISH	APPLICATIONS
DPF 6000XRP	Premium Multi-Purpose Cast Film with X-Scape Technology®	2-Mil (50 Micron)	Clean Removing, Repositionable (Light Gray)	Lay-Flat Polycoated with X-Scape Technology®	Gloss	Multi-Purpose Commercial Wall Graphics (Interior, Exterior) Vehicle Graphics (Full, Partial) Vehicle Decals Fleet Graphics
DPF 6000RP WHITE	Premium Multi-Purpose Cast Film	2-Mil (50 Micron)	DPF 6000RP White: Clean Removing, Repositionable (Light Gray)	Lay-Flat Polycoated	Gloss	Multi-Purpose Commercial Wall Graphics (Interior, Exterior) Vehicle Graphics (Full, Partial) Vehicle Decals Fleet Graphics
DPF 4600GLX/MLX	High Performance Multi-Purpose Film with Low Profile X-Scape Technology®	3.2-Mil (80 Micron)	Repositionable (Light Gray)	Lay-Flat Polycoated with Low Profile X-Scape Technology®	Gloss Matte	Multi-Purpose Commercial Wall Graphics (Interior) Window Graphics Vehicle Graphics (Partial) Vehicle Decals Fleet Graphics
DPF 8000™ ULTRA TACK	Industrial Grade Multi-Purpose Calendered Film for Hard-to-Stick Surfaces	3.5-Mil (90 Micron)	Permanent, Ultra Tack (Clear)	Lay-Flat Polycoated	Satin	Building Wraps Wall Graphics (Exterior) ABS Plastic Graphics
DPF 8200X HIGH TACK	Industrial Grade Calendered Film with Low Profile X-Scape Technology®	3.5-Mil (90 Micron)	Permanent, High Tack (Clear)	Lay-Flat Polycoated with Low Profile X-Scape Technology®	Satin	Building Wraps Wall Graphics (Exterior, Interior) Low Surface Energy Substrates
DPF 8200 HIGH TACK	Industrial Grade Multi-Purpose Calendered Film for Exterior Wall and Low Surface Energy Substrates	3.5-Mil (90 Micron)	Permanent, High Tack (Clear)	Lay-Flat Polycoated	Satin	Building Wraps Wall Graphics (Exterior) Low Surface Energy Substrates



Wrapped in DPF 6700 with Series 3220 Overlaminate by Signs Now Broward



Wrapped in DPF 4600GLX

RECOMMENDED SURFACES	DURABILITY (UNPRINTED)	ROLL WIDTHS	ROLL LENGTHS	COMPATIBLE OVERLAMINATE	INK COMPATIBILITY
Smooth Walls / Compound Curves Deep Channels / Concave Surfaces Corrugated Panels Fleet Panels (Flat with Rivets)	7 Years	1372mm 1524mm	22,86m 45,72m	Series 3210 Series 3270 Series 3310	Eco-Solvent / Solvent UV / Latex Certified for HP Latex Inks
Smooth Walls / Compound Curves Deep Channels / Concave Surfaces Corrugated Panels Fleet Panels (Flat with Rivets)	7 Years	1372mm 1524mm	22,86m 45,72m	Series 3200 Series 3210 Series 3270 Series 3310	Eco-Solvent / Solvent UV / Latex Certified for HP Latex Inks
Glass / Common Sign Substrates Smooth Walls / Soft Curves Fleet Panels (Flat without Rivets)	7 Years ❖	1372mm 1524mm	45,72m	Series 3210 Series 3270 Series 3420 Series 3350	Eco-Solvent / Solvent UV / Latex Certified for HP Latex Inks
Brick, Concrete & Stucco Textured Surfaces & Substrates Smooth Walls ABS Plastics	7 Years *	1372mm 1524mm	22,86m 45,72m	Series 3210 / Series 3270 Series 3420 / ProTec Series 3960	Eco-Solvent / Solvent UV / Latex Certified for HP Latex Inks
Smooth and Textured Surfaces & Substrates Brick, Concrete & Stucco Low Surface Energy Substrates	7 Years *	1372mm 1524mm	45,72m	Series 3210 / Series 3220 Series 3420 ProTec Series 3960	Eco-Solvent / Solvent UV / Latex Certified for HP Latex Inks
Smooth and Textured Surfaces & Substrates Brick, Concrete & Stucco Low Surface Energy Substrates	7 Years *	1372mm 1524mm	22,86m 45,72m	Series 3210 / Series 3270 Series 3420 / ProTec Series 3960	Eco-Solvent / Solvent UV / Latex Certified for HP Latex Inks

* See PIB for warranty exclusions ❖ 7 year durability applies when paired with an Arlon cast overlaminate

WRAPITRIGHT®
INSTRUCTIONAL VIDEO LIBRARY

WATCH THE VIDEO ▶

Uploading an Arlon Media Profile Into HP 300 Series Printers

Learn step-by-step instructions on how to properly upload Arlon Media Profiles into HP 300 RIP software.

For more videos, visit wrapitright.com



FOR MAXIMUM Shelf Life

Problems like mottling, curling, and inconsistencies in release liners can be avoided by storing film at recommended temperatures.

Excess humidity and heat can greatly affect a film's shelf life—so keep your rolls both cool and dry!

Walls Reimagined

Transform ordinary walls into personalized art tailored to each individual customer.



Wrapped in DPF 206

	DESCRIPTION	FACE FILM THICKNESS	ADHESIVE	RELEASE LINER	FINISH	APPLICATIONS
DPF 5200	Printable Etched Glass Cast Film	2-Mil (50 Micron)	Permanent (Clear)	Lay-Flat Synthetic	Etched Glass Silver Etched Glass Sparkle Etched Glass	Window Graphics (Interior, Exterior) Glass & Clear Substrates Partition Graphics
DPF 8200X HIGH TACK	Industrial Grade Calendered Film with Low Profile X-Scape Technology®	3.5-Mil (90 Micron)	Permanent, High Tack (Clear)	Lay-Flat Polycoated with Low Profile X-Scape Technology®	Satin	Building Wraps Wall Graphics (Exterior, Interior) Low Surface Energy Substrates
DPF 6000RP WHITE	Premium Multi-Purpose Cast Film	2-Mil (50 Micron)	Clean Removing, Repositionable (Light Gray)	Lay-Flat Polycoated	Gloss	Wall Graphics (Interior, Exterior) Multi-Purpose Commercial Vehicle Graphics (Full, Partial) Vehicle Decals Fleet Graphics
DPF 4600GLX/MLX	High Performance Multi-Purpose Film with Low Profile X-Scape Technology®	3.2-Mil (80 Micron)	Repositionable (Light Gray)	Lay-Flat Polycoated with Low Profile X-Scape Technology®	Gloss Matte	Wall Graphics (Interior) Window Graphics Multi-Purpose Commercial Vehicle Graphics (Partial) Vehicle Decals Fleet Graphics
DPF 4200 MATTE / CANVAS	Permanent Wall Decoration Film	6-Mil (150 Micron)	Permanent (Clear)	Lay-Flat Polycoated	Matte Canvas	Wall Graphics (Interior)
DPF 206	Removable Coated Wall Fabric	6-Mil (150 Micron)	Removable (Clear)	Lay-Flat Polycoated	Matte	Indoor Advertising Wall Graphics (Interior) Home Décor



Wrapped in DPF 5200

WRAPITRIGHT®

INSTRUCTIONAL VIDEO LIBRARY



WATCH THE VIDEO ▶

Wet Application of a Window Graphic

Using a wet application can help make your project picture perfect. This video demonstrates how to correctly install window graphics with a wet application.

For more videos, visit wrapitright.com

PRO  TIPS

SEAM OVERLAPS

The preferred seam overlap is 1/2"-1" when installing interior walls.

RECOMMENDED SURFACES	DURABILITY (UNPRINTED)	ROLL WIDTHS	ROLL LENGTHS	COMPATIBLE OVERLAMINATE	INK COMPATIBILITY
Glass Clear Substrates	7 Years	1220mm 1524mm	45,72m	N/A	Eco-Solvent / Solvent UV / Latex
Smooth and Textured Surfaces & Substrates Brick, Concrete & Stucco Low Surface Energy Substrates	7 Years *	1372mm 1524mm	45,72m	Series 3210 / Series 3220 Series 3420 ProTec Series 3960	Eco-Solvent / Solvent UV / Latex Certified for HP Latex Inks
Smooth Walls / Compound Curves Fleet Panels (Flat with Rivets) Deep Channels / Concave Surfaces Corrugated Panels	7 Years	1372mm 1524mm	22,86m 45,72m	Series 3210 Series 3270 Series 3310	Eco-Solvent / Solvent UV / Latex Certified for HP Latex Inks
Smooth Walls Glass Common Sign Substrates Soft Curves Fleet Panels (Flat without Rivets)	7 Years ✦	1372mm 1524mm	45,72m	Series 3170 Series 3210 Series 3270 Series 3420 Series 3350	Eco-Solvent / Solvent UV / Latex Certified for HP Latex Inks
Smooth Walls Slightly Textured Walls	1 Year	1372mm	22,86m 45,72m	N/A	Eco-Solvent / Solvent UV
Common Sign Substrates Smooth Walls	1 Year	1372mm	30,45m	N/A	Eco-Solvent / Solvent UV

* See PIB for warranty exclusions ✦ 7 year durability applies when paired with an Arlon cast overlaminate

Heavy Duty Digital

Whether your graphics are going cross country, transatlantic or just across town, you will need a film to withstand the extremes.



Wrapped in DPF 4000

	DESCRIPTION	FACE FILM THICKNESS	ADHESIVE	RELEASE LINER	FINISH	APPLICATIONS
ILLUMINITE WRAP™	Fleet Grade * Class 2 Reflective Film with Low Profile FLITE Technology®	5-Mil (125 Micron)	Clean Removing, Repositionable (Light Gray)	Lay-Flat Polycoated with Low Profile FLITE Technology®	Gloss	Vehicle Graphics (Full, Partial) Vehicle Decals Fleet Graphics Fleet Markings
DPF 2400XLP	Fleet Grade * Reflective Film with Low Profile X-Scape Technology®	5-Mil (125 Micron)	Repositionable (Light Gray)	Lay-Flat Polycoated with Low Profile X-Scape Technology®	Gloss	Fleet Graphics Fleet Markings
DPF 4000	Industrial Grade Calendered Film	3.5-Mil (90 Micron)	Permanent (Clear)	Lay-Flat Polycoated	Satin	Rail & Ocean Container Markings Fleet Markings
DPF 8000™ ULTRA TACK	Industrial Grade Multi-Purpose Calendered Film for Hard-to-Stick Surfaces	3.5-Mil (90 Micron)	Permanent, Ultra Tack (Clear)	Lay-Flat Polycoated	Satin	Building Wraps Wall Graphics (Exterior) ABS Plastic Graphics
DPF 9000	Industrial Grade Heat & Solvent Resistant Calendered Film	3.5-Mil (90 Micron)	Heat, Solvent Resistant Permanent (Clear)	Lay-Flat Polycoated	Satin	Gasoline Pumps Fleet Markings Boat Decals



Wrapped in IllumiNITE Wrap™ with Series 3210 Overlaminate by Blurred Sign Co.



Wrapped in DPF 9000



WATCH THE VIDEO ▶

Preventing Adhesive Build-Up

Adhesive build-up can collect in a printer when printing film that has a soft and aggressive adhesive system. Learn how to remove adhesive build-up on your wide format printer.

For more videos, visit wrapitright.com

RECOMMENDED SURFACES	DURABILITY (UNPRINTED)	ROLL WIDTHS	ROLL LENGTHS	COMPATIBLE OVERLAMINATE	INK COMPATIBILITY
Smooth, Flat Panels / Compound Curves Moderate Channels / Soft Curves Concave Surfaces / Corrugated Panels Fleet Panels (Flat with Rivets)	7 Years	1219mm	9,14m 22,86m 45,72m	Series 3210 Series 3270	Eco-Solvent / Solvent UV / Latex Certified for HP Latex Inks
Smooth, Flat Panels / Compound Curves Moderate Channels / Soft Curves Fleet Panels (Flat with Rivets)	7 Years	1219mm	9,14m 22,86m 45,72m	Series 3210 Series 3200	Eco-Solvent / Solvent UV / Latex
Corrugated Panels Fleet Panels (Flat without Rivets)	7 Years	1245mm 1524mm	45,72m	Series 3170 Series 3270 Series 3420	Eco-Solvent / Solvent UV / Latex
Brick, Concrete & Stucco Textured Surfaces & Substrates Smooth Walls ABS Plastics	7 Years ✦	1372mm 1524mm	22,86m 45,72m	Series 3170 Series 3210 Series 3420 Series 3270 ProTec Series 3960	Eco-Solvent / Solvent UV / Latex Certified for HP Latex Inks
Corrugated Panels Fleet Panels (Flat without Rivets)	7 Years	1245mm 1524mm	45,72m	Series 3170 Series 3270 Series 3420	Eco-Solvent / Solvent UV / Latex

* Fleet Grade exceeds engineering standards ✦ See PIB for warranty exclusions

PRO TIPS

BEFORE YOU Laminate

Always wipe down you media before you laminate. This will ensure that no dust or dirt particles are sealed in.

Flat Out Impressive

Low cost solutions can still turn heads and these films are designed to do just that for your everyday promotional graphics.



Wrapped in DPF 510GTR

	DESCRIPTION	FACE FILM THICKNESS	ADHESIVE	RELEASE LINER	APPLICATIONS
DPF 510G/M DPF 510GT/MT	Promotional Calendered Permanent Film	3.2-Mil (80 Micron)	DPF 510G/M: Permanent (Clear) DPF 510GT/MT: Permanent (Light Gray)	Lay-Flat Polycoated	Standard Signage (Permanent) Display Graphics
DPF 510GTR/MTR	Promotional Calendered Removable Film	3.2-Mil (80 Micron)	Removable, Low Tack (Light Gray)	Lay-Flat Polycoated	Standard Signage (Removable) Display Graphics Window Graphics
DPF 510G/M-HT DPF 510GT/MT-HT	Promotional Calendered High Tack Film	3.2-Mil (80 Micron)	DPF 510G/M-HT: Permanent (Clear) DPF 510GT/MT-HT: Permanent (Light Gray)	Lay-Flat Polycoated	Standard Signage (Permanent) Barricade Graphics Trade Show Graphics
DPF 510GTX/MTX	Promotional Calendered Permanent Film with Low Profile X-Scape Technology®	3.2-Mil (80 Micron)	Permanent (Light Gray)	Lay-Flat Polycoated with Low Profile X-Scape Technology®	Standard Signage (Permanent) Display Graphics
DPF 50WD WHITE/CLEAR	Removable Window Film	DPF 50WD White: 3.5-Mil (90 Micron) DPF 50WD Clear: 4-Mil (100 Micron)	Removable (Clear)	Lay-Flat Polycoated	Window Decals Changeable Signage



Wrapped in DPF 510GT-HT

RECOMMENDED SURFACES	FINISH	DURABILITY (UNPRINTED)	ROLL WIDTHS	ROLL LENGTHS	COMPATIBLE OVERLAMINATE	INK COMPATIBILITY
Common Sign Substrates	Gloss Matte	3 Years	1372mm 1524mm	50m	Series 3510	Eco-Solvent / Solvent / Latex
Common Sign Substrates Glass	Gloss Matte	3 Years	1372mm 1524mm	50m	Series 3510	Eco-Solvent / Solvent / Latex
Common Sign Substrates	Gloss Matte	3 Years	1372mm 1524mm	50m	Series 3510	Eco-Solvent / Solvent / Latex
Common Sign Substrates	Gloss Matte	3 Years	1372mm 1524mm	50m	Series 3510	Eco-Solvent / Solvent / Latex
Glass High Energy Surfaces	DPF 50WD White: Matte DPF 50WD Clear: Gloss	DPF 50WD White: 2 Years DPF 50WD Clear: 1 Year	1372mm 1524mm	45,72m	Series 3200 * Series 3420 *	Eco-Solvent / Solvent UV / Latex *

* Not compatible with DPF 50WD Clear

WRAPITRIGHT®
INSTRUCTIONAL VIDEO LIBRARY

WATCH THE VIDEO ▶

How to Store Vinyl Rolls

By storing your vinyl properly, you'll always get the best performance from your media. This video shows the key elements to storing vinyl in the right environment.

For more videos, visit wrapitright.com

PRO TIPS

SQUEEGEE BASICS 101

Harder squeegees (made from Teflon) are better at fixing sharper wrinkles, while softer squeegees (made from felt) can help fix wrinkles in curved panels.

Multiply Your Protection

Shield and protect your everyday signage from the elements. Arlon overlaminates are designed to protect and prolong the life of your graphic.



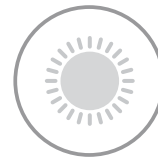
Wrapped in DPF 6700 with Series 3220 Overlaminate by Digital Precision



**Prolonged
Durability**



**Ease of
Application**




**UV
Stability**



**Abrasion
Resistance**



**Quick and
Clean Removal**

	DESCRIPTION	FACE FILM THICKNESS	ADHESIVE	RELEASE LINER	FINISH	DURABILITY	ROLL WIDTHS	ROLL LENGTHS	COMPATIBLE VINYL	
Premium Overlamines	SERIES 3270	Premium Cast Overlaminate	2-Mil (50 Micron)	Permanent (Clear)	Clay Coated	Gloss Matte Satin	7 Years	1372mm 1574mm	18,29m 45,72m	SLX™ Cast Wrap / IllumiNITE Wrap™ / DPF 6100XLP DPF 6000XRP / DPF 6000RP White/Clear / DPF 6500 DPF 6700 / DPF 4600GLX/MLX / DPF 8000™ Ultra Tack DPF 8200X High Tack / DPF 8200 High Tack DPF 9000 / DPF 4000
	SERIES 3210	Premium Cast Overlaminate	1.3-Mil (35 Micron)	Permanent (Clear)	Clay Coated	Gloss	7 Years	1219mm 1372mm 1574mm	45,72m	SLX™ Cast Wrap / IllumiNITE Wrap™ / DPF 6100XLP DPF 6000XRP / DPF 6000RP White/Clear / DPF 6500 DPF 6700 / DPF 4600GLX/MLX / DPF 8000™ Ultra Tack DPF 8200X High Tack / DPF 8200 High Tack
	SERIES 3310 	Extended Life Polyurethane Overlaminate	1.5-Mil (38 Micron)	Permanent (Clear)	Clay Coated	Gloss	10 Years *	1372mm 1574mm	45,72m	SLX™ Cast Wrap / DPF 6100XLP / DPF 6000XRP DPF 6000RP White/Clear
	SERIES 3170	Intermediate Cast Overlaminate	1.3-Mil (35 Micron)	Permanent (Clear)	Clay Coated	Gloss	7 Years †	1372mm 1574mm	45,72m	Fusion Wrap / DPF 4600GLX/MLX / DPF 4500GX DPF 4500GT/MT / DPF 4300 / DPF 8200 High Tack DPF 8000X High Tack
	SERIES 3420	Calendered Overlaminate	3-Mil (75 Micron)	Permanent (Clear)	Clay Coated	Gloss Matte Satin	5 Years	1372mm 1574mm	45,72m	DPF 4600GLX/MLX / DPF 4500GLX/MLX DPF 4500GLX/MLX / DPF 4500G DPF 4500GT/MT / DPF 4500G White DPF 8200X High Tack / DPF 8200 High Tack DPF 8000™ Ultra Tack / DPF 4000 / DPF 9000 DPF 50WD White/Clear
	SERIES 3510	Promotional Calendered Overlaminate	3.2-Mil (80 Micron)	Permanent (Clear)	Polycoated Kraft	Gloss Matte	3 Years	1372mm 1574mm	50m	DPF 510G/M / DPF 510GT/MT / DPF 510GTR/MTR DPF 510G/M-HT / DPF 510GT/MT-HT / DPF 510GTX/MTX
Specialty Overlamines	SERIES 3200	Premium High Gloss Optically Clear Overlaminate	2-Mil (50 Micron)	Permanent (Clear)	Lay-Flat Synthetic	Gloss	7 Years	1372mm 1524mm	45,72m	IllumiNITE Wrap™ / DPF 6000RP Clear / DPF 6500 DPF 6700 / DPF 4500G Clear / DPF 45WF DPF 47WF / DPF 50WD White/Clear
	SERIES 3350	Anti-Graffiti PVDF Overlaminate	2-Mil (50 Micron)	Permanent (Clear)	Lay-Flat Polycoated	Satin	10 Years	1372mm	45,72m	Most Digital and Screen Print Films
	PROTEC SERIES 3960	Heavy Duty Calendered Overlaminate	12-Mil (305 Micron)	Permanent (Clear)	Lay-Flat Synthetic	Gloss	2 Years	1372mm	22,86m	DPF 8000™ Ultra Tack / DPF 8200 High Tack DPF 8200X High Tack / DPF 4600GLX/MLX

 Environmentally Friendly * 10 years vertical exposure and up to 4 years horizontal exposure † 7 year durability only compatible with Arlon cast and polymeric calendered media

